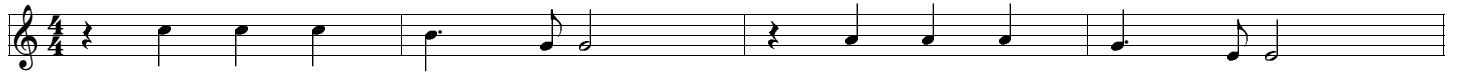


# 落合美川邑

作詞 森田敏久 講元信義  
作曲 講元信義

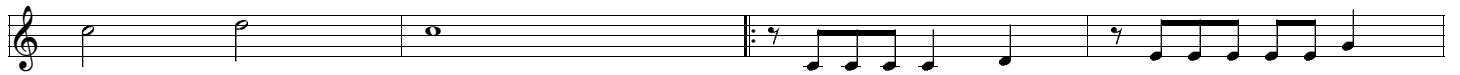
♩=120  
Cmaj



Am Em Fmaj Gmaj



Cmaj Cmaj Cmaj Em



はるかな る やまのすその

Am Em Fmaj Em Am



やわらかなひ ざ し はる は そ こ ま で

Cmaj Em Am Em



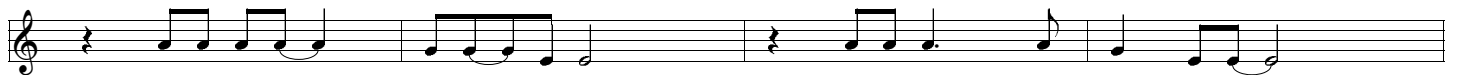
しほん や なぎ は かわも に なび き

Am Em Fmaj Em Am



びच्चゅ う がわ は しずかに ながれ る

Fmaj Em Am Em



いくども いく ども せだい は かわり

るが

Fmaj Em Fmaj Gmaj



なんねんも なんねんも たた ずんでい る

Gmaj7 Cmaj Em Am



たいご さ くら は しずか に

Em Am Em Fmaj



みて いる きょうも げ んき に ほほえみ ながら

Gmaj Fmaj Gmaj Cmaj



ここ は おち あ い みかわむ ら

Fmaj Fmaj Gmaj Cmaj



そん な ぶる さ と みかわむ ら

Cmaj Cmaj Em Am



Em Am Em Fmaj



るが

Gmaj Cmaj Cmaj

The image shows a single musical staff with a treble clef. Above the staff, the chord symbols Gmaj, Cmaj, and Cmaj are written above the first, second, and third measures respectively. The first measure contains a half note G4. The second measure contains a quarter note A4, a quarter note B4, and a quarter note C5. The third measure contains a half note C5. The fourth measure contains a whole note C5. The staff ends with a double bar line.